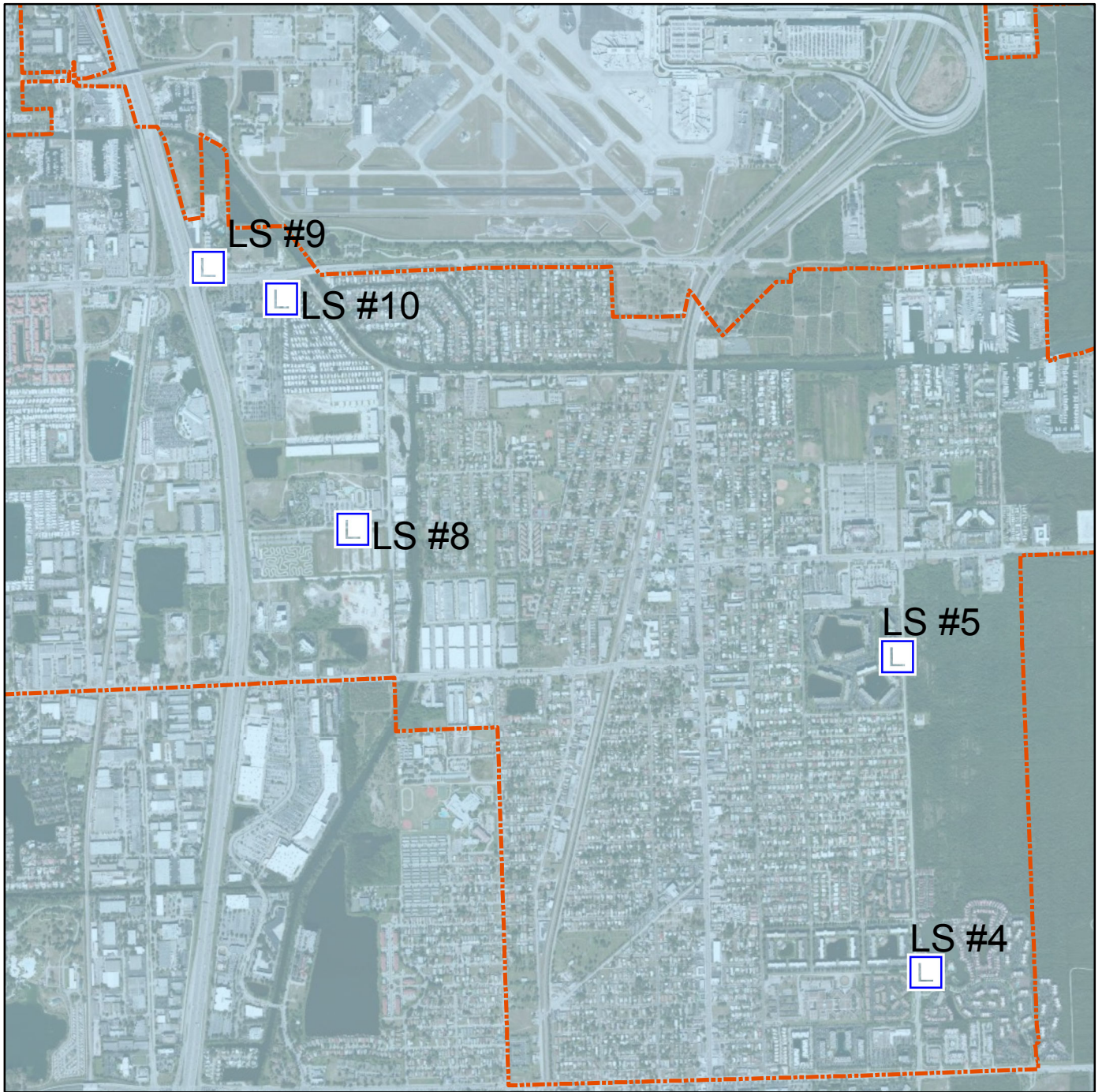




City of Dania Beach
 PUBLIC SERVICES DEPARTMENT
 1201 Stirling Road
 Dania Beach, FL 33004

SANITARY LIFT STATIONS Phase 2 Project



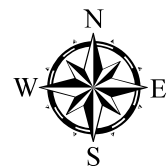
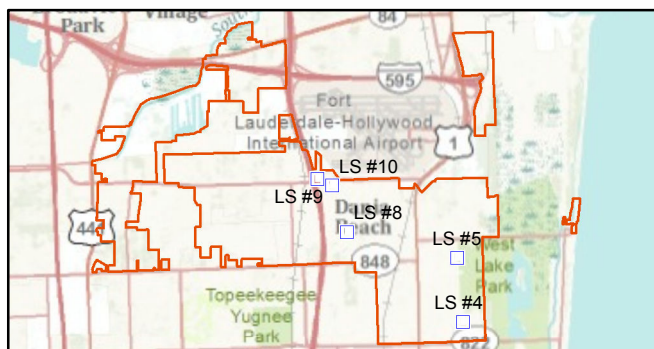
This information comes from a combination of field observations, design and record drawings. The City assumes no liability for damages arising from errors or omissions.

Legend

 Phase2

Page of

Date Printed: 9/21/2011



1 in = 2,000 ft



Coordinate System: NAD 1983 StatePlane Florida East FIPS 0901 Feet Transverse Mercator